

SUMMARY PROSPECTUS SUPPLEMENT

NORTHERN FUNDS
GLOBAL FIXED INCOME FUNDSUPPLEMENT DATED OCTOBER 26, 2011 TO
SUMMARY PROSPECTUS DATED JULY 31, 2011

Northern Trust Investments, Inc. is scheduled to increase the expense reimbursement it provides to the Global Fixed Income Fund effective as of January 1, 2012. This increase in expense reimbursement will have the effect of reducing the Total Annual Fund Operating Expenses paid by investors. The following chart illustrates the increase in expense reimbursement:

Fund	Total Annual Fund Operating Expenses After Expense Reimbursement	Operating Expense Reduction	Total Annual Fund Operating Expenses After Expense Reimbursement Effective 1/1/2012
Global Fixed Income	1.15%	-0.35%	0.80%

The new contractual expense reimbursement arrangement is expected to continue from implementation until at least December 31, 2012.

Please retain this Supplement with your Summary Prospectus for future reference.

50 South LaSalle Street
P.O. Box 75986
Chicago, Illinois 60675-5986
800-595-9111
northernfunds.com



Managed by
Northern Trust

NF SPT GFI (10/11)

NORTHERN FUNDS

Global Fixed Income Fund



Managed by
Northern Trust

Summary Prospectus | July 31, 2011

Ticker: NOIFX

Before you invest, you may want to review the Fund's complete Prospectus, which contains more information about the Fund and its risks. You can find the Fund's complete Prospectus and other information about the Fund online at www.northernfunds.com/prospectus. You can also get this information at no cost by calling 800-595-9111 or by sending an e-mail request to northern-funds@ntrs.com. If you purchase shares of the Fund through a financial intermediary (such as a bank or a broker-dealer), the complete Prospectus and other information are also available from your financial intermediary. The Fund's complete Prospectus and Statement of Additional Information, both dated July 31, 2011, as supplemented, are incorporated by reference into this summary prospectus and may be obtained, free of charge, at the website, phone number or e-mail address noted above.

INVESTMENT OBJECTIVE

The Fund seeks to maximize total return (capital appreciation and income) consistent with reasonable risk.

FEES AND EXPENSES OF THE FUND

This table describes the fees and expenses that you may pay if you buy and hold shares of the Fund.

Shareholder Fees (fees paid directly from your investment)

None

Annual Fund Operating Expenses (expenses that you pay each year as a percentage of the value of your investment)

Management Fees	0.85%
Distribution (12b-1) Fees	0.00%
Other Expenses	0.73%
Administration Fees	0.15%
Transfer Agency Fees	0.10%
Other Operating Expenses	0.48%
Total Annual Fund Operating Expenses	1.58%
Expense Reimbursement ⁽¹⁾	(0.43)%
Total Annual Fund Operating Expenses After Expense Reimbursement	1.15%

⁽¹⁾ Northern Trust Investments, Inc. ("NTI" or the "Investment Adviser") has contractually agreed to reimburse certain expenses of the Fund. Reimbursed amounts are charged first against "Management Fees" and then, if necessary, against "Other Expenses" to the extent they exceed "Management Fees." The contractual reimbursement arrangement is expected to continue until at least July 31, 2012. After this date, NTI or the Fund may terminate the contractual arrangement. The Fund's Board of Trustees may terminate the contractual arrangement at any time if it determines that it is in the best interest of the Fund and its shareholders.

EXAMPLE

The following Example is intended to help you compare the cost of investing in the Fund with the cost of investing in other mutual funds. The Example assumes that you invest \$10,000 in the Fund for the time periods indicated and then redeem all of your shares at the end of those periods. The Example also assumes that your investment has a 5% return each year and that the Fund's operating expenses remain the same. Although

your actual costs may be higher or lower, based on these assumptions your costs would be:

1 Year	3 Years	5 Years	10 Years
\$117	\$457	\$820	\$1,842

PORTFOLIO TURNOVER. The Fund pays transaction costs, such as commissions, when it buys and sells securities (or "turns over" its portfolio). A higher portfolio turnover rate may indicate higher transaction costs and may result in higher taxes when Fund shares are held in a taxable account. These costs, which are not reflected in annual portfolio operating expenses or in the Example, affect the Fund's performance. During the most recent fiscal year, the Fund's portfolio turnover rate was 62.09% of the average value of its portfolio.

PRINCIPAL INVESTMENT STRATEGIES

In seeking to maximize total return, the Fund will invest, under normal circumstances, at least 80% of its net assets in bonds and other fixed-income securities. The Fund intends to invest in the securities of issuers located in a number of countries throughout the world. The securities in which the Fund may invest include:

- Obligations of foreign or domestic governments, their agencies, instrumentalities or sponsored enterprises, including obligations that are issued by private issuers that are guaranteed as to principal and interest by the U.S. or foreign governments, their agencies or instrumentalities;
- Obligations of supranational organizations (such as the World Bank);
- Obligations of foreign or domestic corporations and banks;
- Zero coupon bonds, debentures, preferred stock and convertible securities of foreign or domestic issuers; and
- Mortgage and other asset-backed securities.

The Fund primarily invests in mature markets (such as Japan, the United Kingdom and the U.S.). However, it may to a lesser extent also make investments in emerging markets (such as Argentina and China). Investments are made based on the investment management team's outlook for the relative economic growth, expected inflation and other economic and political prospects of each country or region.

The Fund primarily invests in investment grade fixed-income securities (i.e., obligations rated within the top four rating categories by a Nationally Recognized Statistical Rating Organization (“NRSRO”) or of comparable quality as determined by the Investment Advisers). In addition, it may invest to a limited extent in obligations that are rated below-investment grade (commonly referred to as “junk bonds”).

In buying and selling securities for the Fund, the investment management team uses a relative value approach. This approach involves an analysis of general economic and market conditions. It also involves the use of models that analyze and compare expected returns and assumed risks. Under the relative value approach, the investment management team will emphasize particular securities and types of securities (such as governmental, supranational and corporate obligations) that the team believes will provide a favorable return in light of these risks.

The Fund’s dollar-weighted average maturity, under normal circumstances, will range between three and eleven years.

The Fund is “non-diversified” under the Investment Company Act of 1940, as amended (the “1940 Act”), and may invest more of its assets in fewer issuers than “diversified” mutual funds.

PRINCIPAL RISKS

MARKET RISK is the risk that the market values of fixed-income securities owned by the Fund may decline, at times sharply and unpredictably.

MANAGEMENT RISK is the risk that a strategy used by the investment management team may fail to produce the intended results.

LIQUIDITY RISK is the risk that certain portfolio securities may be less liquid than others, which may make them difficult or impossible to sell at the time and the price that the Fund would like, adversely affecting the value of the Fund’s investments and its returns.

INTEREST RATE/MATURITY RISK is the risk that the value of the Fund’s assets will decline because of rising interest rates. This risk is generally lower for funds that have shorter-weighted maturities, such as money market funds and short-term bond funds. The magnitude of this decline will often be greater for longer-term fixed-income securities than shorter-term fixed-income securities.

PREPAYMENT (OR CALL) RISK is the risk that prepayment of the underlying mortgages or other collateral of some fixed-income securities may result in a decreased rate of return and a decline in value of those securities.

DEBT EXTENSION RISK is the risk that an issuer will exercise its right to pay principal on an obligation held by the Fund (such as a mortgage-backed security) later than expected. This may happen during a period of rising interest rates. Under these circumstances, the value of the obligation will decrease and the Fund will suffer from the inability to invest in higher yielding securities.

CREDIT (OR DEFAULT) RISK is the risk that the inability or unwillingness of an issuer or guarantor of a fixed-income security, or a counterparty to a repurchase or other transaction, to meet its payment or other financial obligations will adversely affect the value of the Fund’s investments and its returns. Changes in the credit rating of a debt security held by the Fund could have a similar effect.

INFLATION RISK is the risk that interest payments on inflation-indexed securities can be unpredictable and will vary as the principal and/or interest is periodically adjusted based on the rate of inflation. If the index measuring inflation falls, the interest payable on these securities will be reduced.

FOREIGN SECURITIES RISK is the risk that investing in foreign (non-U.S.) securities may result in the Fund experiencing more rapid and extreme changes in value than a fund that invests exclusively in securities of U.S. companies, due to less liquid markets and adverse economic, political, diplomatic, financial, and regulatory factors. Foreign governments also may impose limits on investment and repatriation and impose taxes. Any of these events could cause the value of the Fund’s investments to decline.

CURRENCY RISK is the risk that foreign currencies will fluctuate in value relative to the U.S. dollar, adversely affecting the value of the Fund’s investments and its returns. Because the Fund’s net asset value is determined on the basis of U.S. dollars, you may lose money if the local currency of a foreign market depreciates against the U.S. dollar, even if the market value of the Fund’s holdings appreciates.

NON-DIVERSIFICATION RISK is the risk that the Fund may be more susceptible to adverse financial, economic or other developments affecting any single issuer, and more susceptible to greater losses because of these developments, than if it were diversified.

EMERGING MARKETS RISK is the risk that markets of emerging market countries are less developed and less liquid, subject to greater price volatility and generally subject to increased economic, political, regulatory and other uncertainties than more developed markets.

As with any mutual fund, it is possible to lose money on an investment in the Fund. An investment in the Fund is not a deposit of any bank and is not insured or guaranteed by the Federal Deposit Insurance Corporation, any other government agency, or The Northern Trust Company, its affiliates, subsidiaries or any other bank.

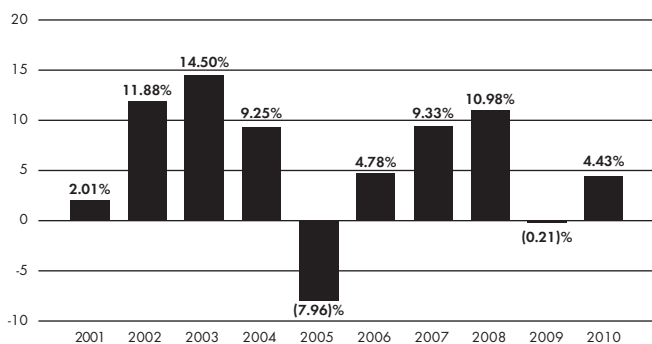
FUND PERFORMANCE

The bar chart and table that follow provide an indication of the risks of investing in the Fund by showing (A) changes in the performance of the Fund from year to year, and (B) how the average annual total returns of the Fund compare to those of a broad-based securities market index.

The Fund's past performance, before and after taxes, is not necessarily an indication of how the Fund will perform in the future.

Updated performance information for the Fund is available and may be obtained on the Fund's Web site at www.northernfunds.com or by calling 800-595-9111.

CALENDAR YEAR TOTAL RETURN*



*Year to date total return for the six months ended June 30, 2011 is 3.42%. For the periods shown in the bar chart above, the highest quarterly return was 9.71% in the fourth quarter of 2008, and the lowest quarterly return was (4.90)% in the first quarter of 2009.

AVERAGE ANNUAL TOTAL RETURN

(For the periods ended December 31, 2010)

	Inception Date	1-Year	5-Year	10-Year	Since Inception
Global Fixed Income Fund	4/01/94				
Return before taxes		4.43%	5.79%	5.70%	5.23%
Return after taxes on distributions		2.18%	4.28%	4.23%	3.57%
Return after taxes on distributions and sale of Fund shares		3.29%	4.13%	4.07%	3.50%
JP Morgan Government Bond Index Global (reflects no deduction for fees, expenses, or taxes)		6.42%	7.35%	7.12%	6.49%

After-tax returns are calculated using the historical highest individual federal marginal income tax rates and do not reflect the impact of state and local taxes. Actual after-tax returns depend on an investor's tax situation and may differ from those shown. After-tax returns shown are not relevant to investors who hold their shares through tax-deferred arrangements, such as 401(k) plans or individual retirement accounts.

In calculating the federal income taxes due on redemptions, capital gains taxes resulting from redemptions are subtracted from the redemption proceeds and the tax benefits from capital losses resulting from the redemptions are added to the redemption proceeds. Under certain circumstances, the addition of the tax benefits from capital losses resulting from redemptions may cause the Returns After Taxes on Distributions and Sale of Fund Shares to be greater than the Returns After Taxes on Distributions or even the Returns Before Taxes.

MANAGEMENT

INVESTMENT ADVISERS AND PORTFOLIO MANAGERS.

Northern Trust Investments, Inc. and Northern Trust Global Investments Limited, each an indirect subsidiary of Northern Trust Corporation, serve jointly as the Investment Advisers of the Global Fixed Income Fund. David Blake, Senior Vice President of Northern Trust Investments, Inc., and Daniel Smith, Vice President of Northern Trust Investments, Inc., have been managers of the Fund since April 2008 and April 2009, respectively.

PURCHASE AND SALE OF FUND SHARES

You may purchase Fund shares through your account at Northern Trust or an authorized intermediary or you may open an account directly with Northern Funds (the "Trust") with a minimum initial investment of \$2,500 in the Fund (\$500 for an IRA; \$250 under the Automatic Investment Plan; and \$500 for employees of Northern Trust and its affiliates). The minimum subsequent investment is \$50 (except for reinvestments of distributions for which there is no minimum). The Fund reserves the right to waive these minimums.

On any business day, you may sell (redeem) or exchange shares through your account by contacting your Northern Trust account representative or authorized intermediary. If you purchase shares directly from the Trust, you may sell (redeem) or exchange your shares in one of the following ways:

- By Mail – Send a written request to: Northern Funds, P.O. Box 75986, Chicago, Illinois 60675-5986.
- By Telephone – Authorize the telephone privilege on your New Account Application. Call 800-595-9111 to use the telephone privilege.
- By Wire – Authorize wire redemptions on your New Account Application and have proceeds sent by federal wire transfer to a previously designated account (the minimum redemption amount by this method is \$250). You will be charged \$15 for each wire redemption unless the designated account is maintained at Northern Trust or an affiliated bank. Call 800-595-9111 for instructions.
- By Systematic Withdrawal – If you own shares of the Fund with a minimum value of \$10,000, you may elect to have a fixed sum redeemed at regular intervals and distributed in cash or reinvested in one or more other funds of the Trust. Call 800-595-9111 for an application form and additional information. The minimum amount is \$250 per withdrawal.
- By Exchange – Complete the Exchange Privilege section of your New Account Application to exchange shares of one fund in the Trust for shares of another fund in the Trust. Shares being exchanged must have a value of at least \$1,000 (\$2,500 if a new account is being established by the exchange, \$500 if the new account is an IRA). Call 800-595-9111 for more information.

- By Internet – You may initiate transactions between Northern Trust banking and Fund accounts by using Northern Trust Private Passport. For details and to sign up for this service, go to www.northernfunds.com or contact your Relationship Manager.

TAX INFORMATION

The Fund's distributions are generally taxable to you as ordinary income, capital gains, or a combination of the two, unless you are investing through a tax-exempt or tax-deferred arrangement, such as a 401(k) plan or an individual retirement account. Distributions may be taxable upon withdrawal from tax-deferred accounts.

PAYMENTS TO BROKERS-DEALERS AND OTHER FINANCIAL INTERMEDIARIES

If you purchase the Fund through a broker-dealer or other financial intermediary (such as a bank), the Fund and its related companies may pay the intermediary for the sale of Fund shares and related services. These payments may create a conflict of interest by influencing the broker-dealer or other intermediary and your salesperson to recommend the Fund over another investment. Ask your salesperson or visit your financial intermediary's Web site for more information.